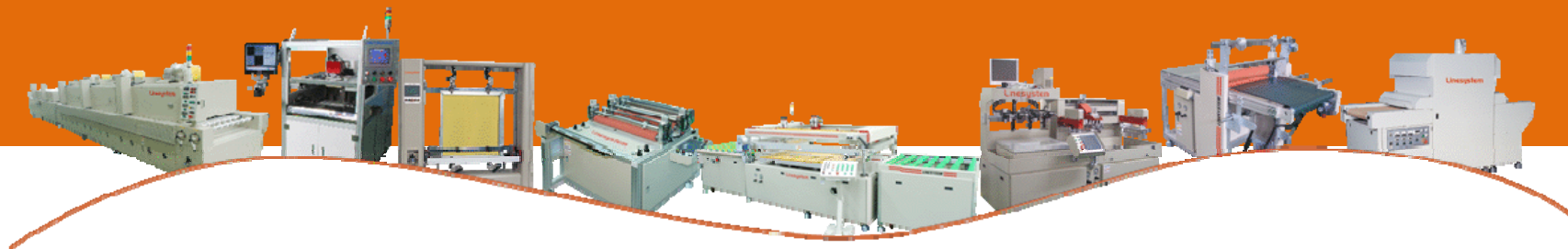


COMPANY PROFILE



LINE **LINESYSTEM CO.,LTD**
Total Communication with Screen Printing Equipment
TEL : +82-31-433-2374 FAX : +82-31-433-2376
HOMEPAGE : www.linesystem.co.kr



About Us

- Introduction
- Management Philosophy & Vision
- Organization
- History
- Certificate
- Overseas Factories & Branches
- Company Location



Service & Production

- Customer Service
- Production Process
- Equipments
- Business Partner
- Overseas Exporting Countries





LINESYSTEM CO.,LTD
Total Communication with Screen Printing Equipment



www.linesystem.co.kr

HEAD OFFICE(FACTORY)



Contact Us(Head Office)
Tel. +82-31-433-2374
E-mail. screen@linesystem.co.kr



Contact Us(China Factory)
Tel. +86-22-2397-0936
E-mail. line-system@hotmail.com

- Company Name	LINESYSTEM CO.,LTD
- President	LEE SOON JAE
- Company Registration No.	134 – 81 -47535
- Date of Establishment	1999. 10. 11
- Business Condition	Total Communicaton with Screen Printing Equipments
- Address	1255-5(2NA-106) Shihwa Industrail Complex, Jungwang-Dong,Shihung-City Kyunggi-Do,Korea
- Tel	+82-31-433-2374
- Fax	+82-31-433-2376
- Homepage	www.linesystem.co.kr
- E-mail	screen@linesystem.co.kr





CHINA TIANJIN FACTORY



Contact Us(Head Office)
Tel. +82-31-433-2374
E-mail. screen@linesystem.co.kr



Contact Us(China Factory)
Tel. +86-22-2397-0936
E-mail. line-system@hotmail.com

- Company Name	LINESYSTEM CO.,LTD
- President	LEE SOON JAE
- Company Registration No.	1200666135307
- Date of Establishment	2007. 11. 14
- Business Condition	Total Communicaton with Screen Printing Equipments
- Address	B6-3 F1-B, XEDA Industry Zone, Xiqing Develop ment Zone, Tianjin China
- Tel	+86-22-2397-0935~6
- Fax	+86-22-2397-0939
- Homepage	www.linesystem.net.cn
- E-mail	line-system@hotmail.co.kr





MANAGEMENT PHILOSOPHY & VISION

VISION "Which is growing towards a global corporation"



MANAGEMENT PHILOSOPHY

IMPROVEMENT

Activity thinking determines
the company's future.

TECHNOLOGY

We shall provide the best
technology to customers.

KINDNESS

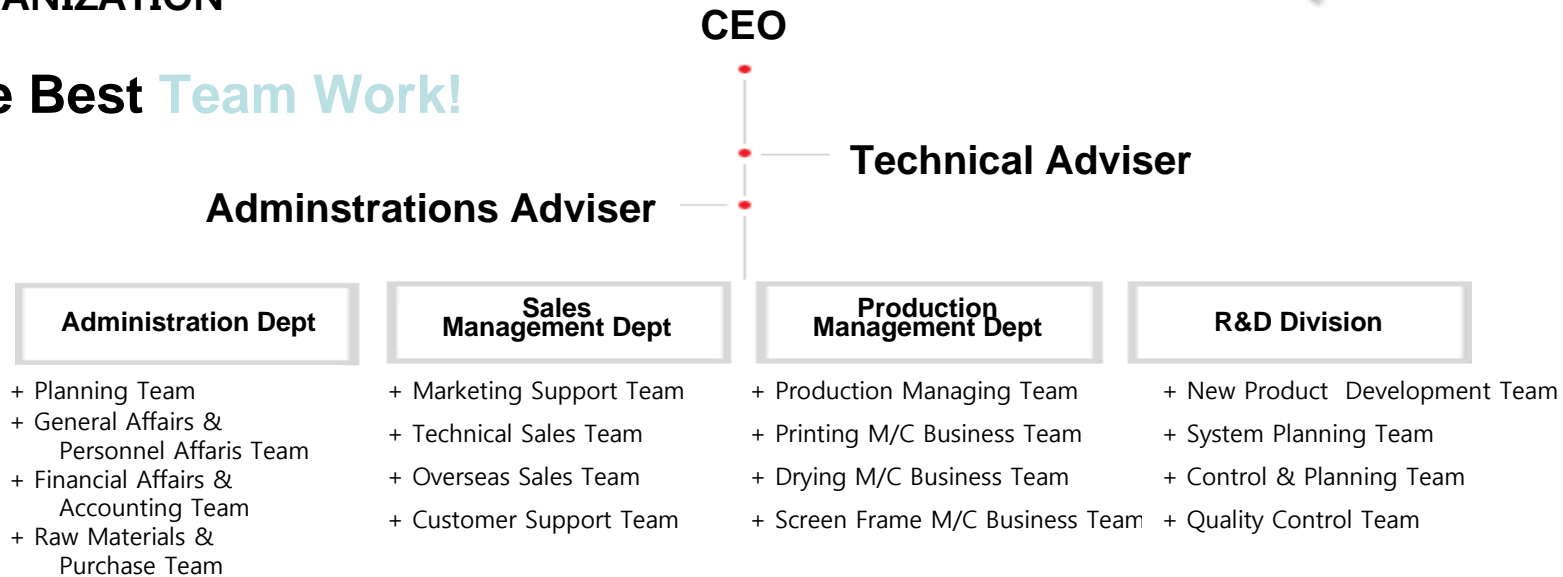
Customers are the
company's companions.





ORGANIZATION

The Best Team Work!

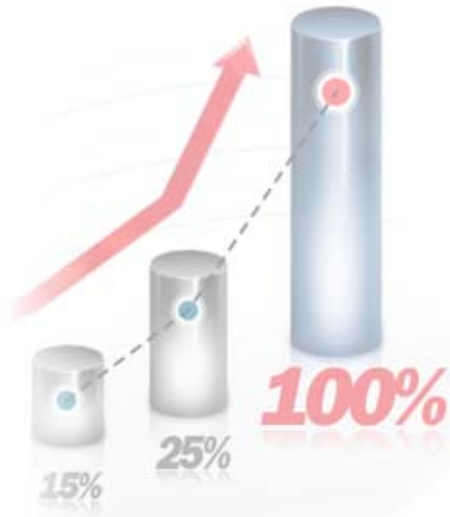


	Administration Dept	Sales Management Dept	Production Management Dept	R&D Division
Executive	2	1	1	
Manager	2	2	3	1
General	2	1	10	
Technical			6	3
Total	6	4	20	4





HISTORY



1999/ 10. 'LINESYSTEM CO.,LTD incorporation

12. Screen printing of association of korea joined

2000/ 02. Localized the screen printing only for BLU(Back light) in the domestic first

04. Developed the VISION SYSTEM PRINTER for E.L printing

06. Developed NIR dryer firstly in korea

2001/ 07. Opened Malaysia office and A/S office

09. Opened Bangkok office and A/S office

10. Developed ¾ automatic screen printer for car's area light emitting device

2002/ 06. Developed fully automatic screen printing for TOUCH PANEL

07. ISO 9001:2000 quality certification acquisition

2003/ 08. Developed the automatic screen printing line for giant glass

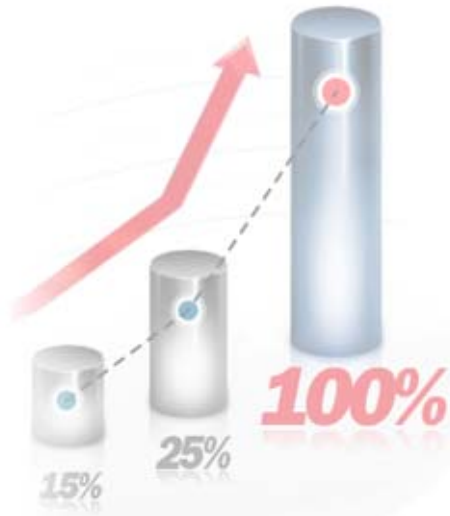
2004/ 07. Developed the high precision screen printer for FPCB

12. Opened Jakarta office and A/S office in indonesia





HISTORY



- 2005/*
11. Supplied the Big Automatic Printing Line for Glass to HANGLASS(3500*2400mm)
 12. More than 50% sales amount is increased in 2005 compare with 2004

- 2006/*
02. Clean workplace certified acquisition

10. Exported NIR DRYER LINE to ASAHI GLASS philippines

- 2007/*
03. Obtained the CE mark certificate of 2-axis semiautomatic screen printer (LSP-5040P) and exported to poland.

11. Established tianjin factory in china(LINESYSTEM(TIANJIN) CO.,LTD)

- 2008/*
04. Exported 2-axis semi automatic screen printer(LSP-5040P) to russia

05. Registered the patent of screen printing method and screen printing equipment with it.

08. Developed screen printing line for SOLAR CELL
Solar cell screen printing line was selected by 'superior product of small business in this month(electronic newspaper)

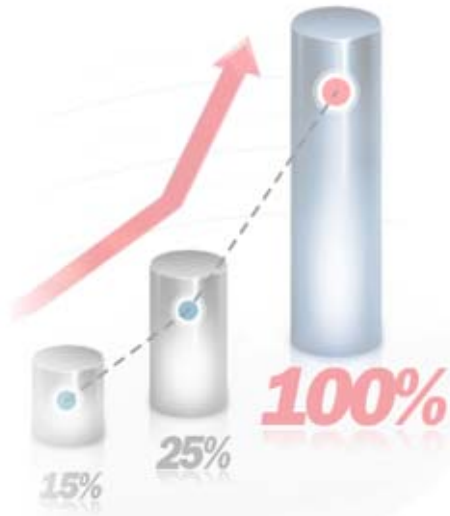
11. Developed large-sized fully automatic screen printing line for LCD TV

12. Certified by the small and medium business administration as the technology innovation business (INNO-BIZ)





HISTORY



2009/ 04. Exported NIR Dryer to ASAHI GLASS japan

05. Registered the patent of screen printing equipment for solar cell

06. Exported high precision semi automatic screen printer, NIR dryer to suzhou, beijing factory BOECT

08. Registered the patent of printing material's automatic arrangement facility and method of screen printing facility.
Supplied the Touch window automatic printing line samsung display

2010/ 02. Supplied automatic screen printing line for light guide plate
HEESUNG ELECTRONICS poland

03. Certified by CE mark of large-sized screen printing line (LSP-14090TIA)

05. Certified by CE mark of large-sized screen printing line (LSP-14080TIA)

07. Supplied automatic screen printing line for light guide plate I NANOTECH slovakia

09. Selected as 2010's promising small business in gyeonggi-do

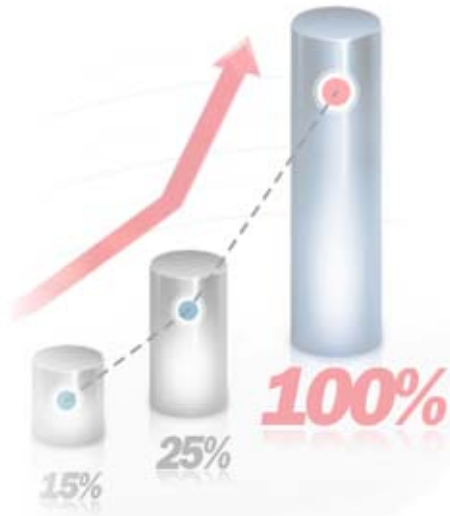
12. Growth of 250% sales in 2011, in comparison with 2010 sales

Certified by kyonggi regional office small&medium business administration as the export promising small business in 2010





HISTORY



2011/ 01. Supplied fully automatic screen printing for THIN FILM SOLAR CELL for china shanghai

11. Supplied glass window turn table fully automatic screen printing line for LG INNOTEK

Fully automatic screen printing for solar cell for crystalloid order

2012/ 04. Supplied glass window turn table fully automatic screen printing line for samsung

05. Supplied glass window turn table fully automatic screen printing line for samsung vietnam

08. Registered the part center alignment device patent

09. Supplied large-sized semi automatic screen printing line for HEESUNG ELECTRONIC guangzhou factory

10. Supplied turn table fully automatic screen printer for LG DISPLAY



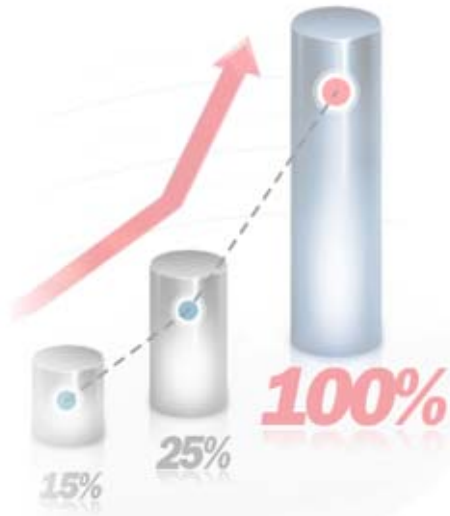


HISTORY

2013/ 02. Certification Acquired for Environmental Management

03. Supplied glass window turn table fully automatic screen printing line for NEPES (Vision Alignment System)

07. Supplied glass window fully automatic screen printing line for HEE SUNG(Shuttle Type Vision Alignment System) 15.8inch for LG



2014/ 03. Supplied vision printing line of Touch Film Sensor for SAMSUNG Vietnam

12. Thermal transfer printer development





CERTIFICATE



■ Certificate of patent

- Part center alignment device
- Printing automatic sorting device for screen printing facilities and it's method
- Screen printing method and screen printing device with the use of the method
- Screen printing device for photovoltaic cell

■ CE Certificate (LSP-14090TIA)

■ CE Certificate (LSP-14080TIA)

■ ISO 9001:2008 Certificate

■ OHSAS 18001:2007 Certificate Health and safety management system

■ KS I ISO 14001:2009/ISO 14001:2004 Certificate





CERTIFICATE



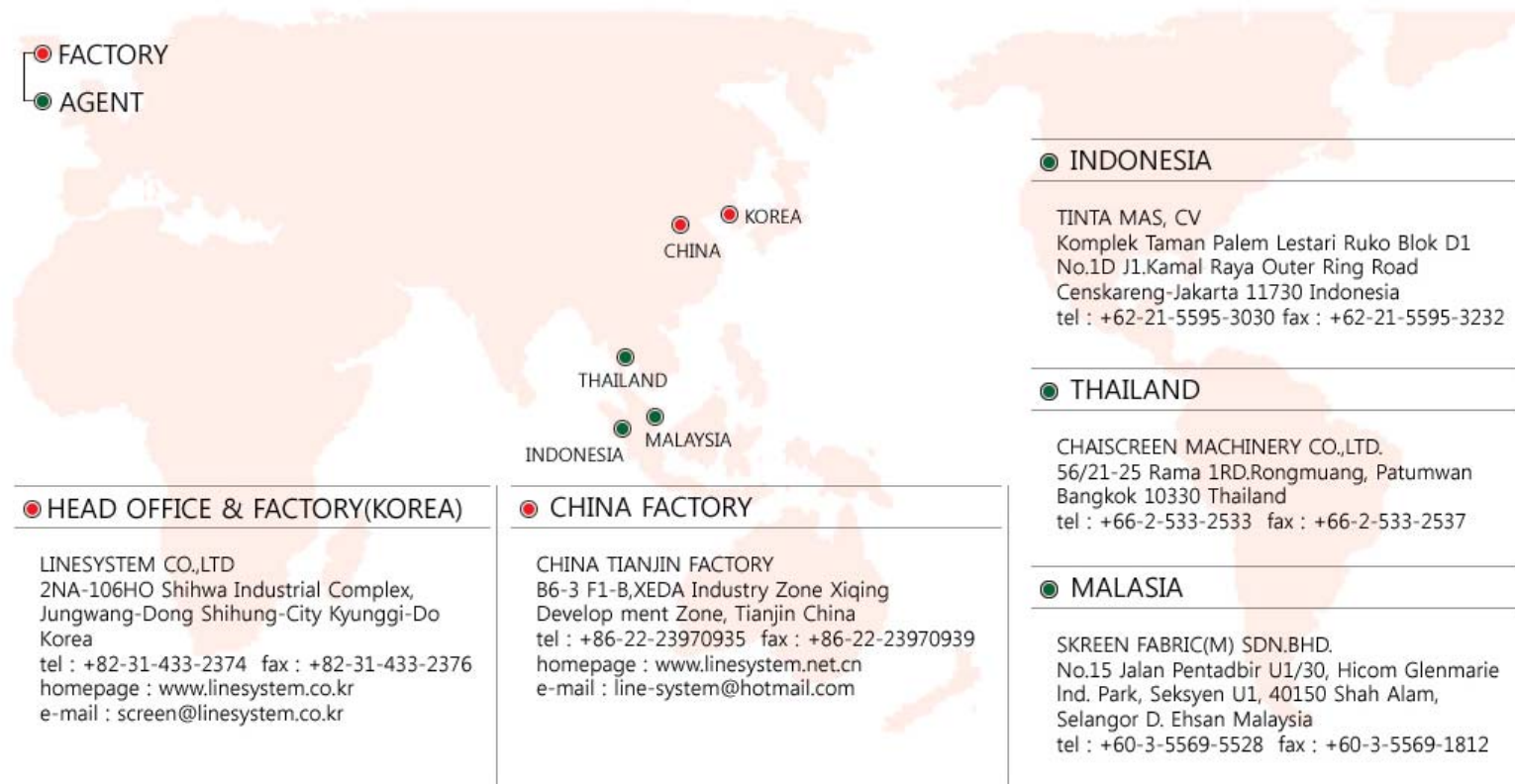
- Safety S mark certificate (LSP-7260FV)
- 2010 Promising SMS enterprise in gyeonggi selected
- Small and medium sized(SMS) enterprise for technological innovation certified
- Korea industrial technology association joined
- Screen printing association of korea certified
- Department of research & development certified
- Clean workplace certified
- KPU Enterprise partnership approved





OVERSEAS FACTORIES & BRANCHES

- FACTORY
- AGENT



● HEAD OFFICE & FACTORY(KOREA)

LINESYSTEM CO.,LTD
2NA-106HO Shihwa Industrial Complex,
Jungwang-Dong Shihung-City Kyunggi-Do
Korea
tel : +82-31-433-2374 fax : +82-31-433-2376
homepage : www.linesystem.co.kr
e-mail : screen@linesystem.co.kr

● CHINA FACTORY

CHINA TIANJIN FACTORY
B6-3 F1-B,XEDA Industry Zone Xiqing
Develop ment Zone, Tianjin China
tel : +86-22-23970935 fax : +86-22-23970939
homepage : www.linesystem.net.cn
e-mail : line-system@hotmail.com

● INDONESIA

TINTA MAS, CV
Komplek Taman Palem Lestari Ruko Blok D1
No.1D J1.Kamal Raya Outer Ring Road
Censkareng-Jakarta 11730 Indonesia
tel : +62-21-5595-3030 fax : +62-21-5595-3232

● THAILAND

CHAISCREEN MACHINERY CO.,LTD.
56/21-25 Rama 1RD.Rongmuang, Patumwan
Bangkok 10330 Thailand
tel : +66-2-533-2533 fax : +66-2-533-2537

● MALASIA

SKREEN FABRIC(M) SDN.BHD.
No.15 Jalan Pentadbir U1/30, Hicom Glenmarie
Ind. Park, Seksyen U1, 40150 Shah Alam,
Selangor D. Ehsan Malaysia
tel : +60-3-5569-5528 fax : +60-3-5569-1812



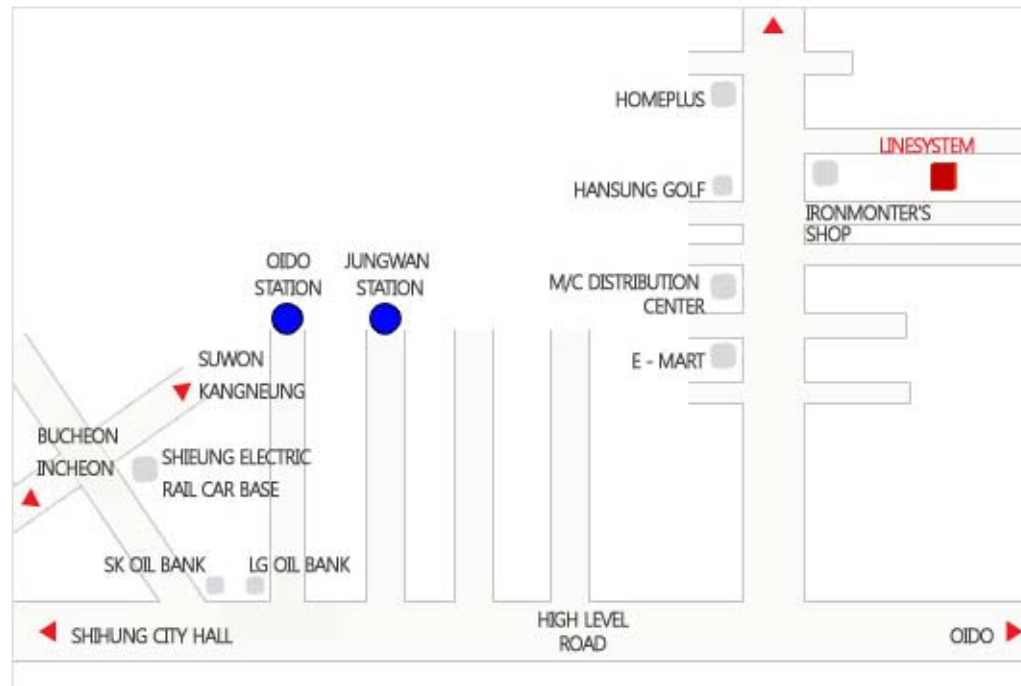


LINESYSTEM CO.,LTD
Total Communication with Screen Printing Equipment



www.linesystem.co.kr

COMPANY LOCATION



Address

(2NA-106HO) Shihwa Industrial Complex
Jungwang-Dong Shihung-City, Kyunggi-Do, KOREA

M

10 minutes driving from Jungwan station
of line four

10 minutes driving from Oido station
of line four

E-mail : screen@linesystem.co.kr

Tel : + 82-31-433-2374 Fax : +82-31-433-2376





CUSTOMER SERVICE

+ Hurried to the Scene Service

24 Hours service standby.
We'll be hurried to the scene when emergent A/S service is registered, so that customers' precious time is not wasted.

+ Service Responsibility

We give our names and honor.
We guarantee our service and our staff will give you the business card. Also, we notify you the name and division that staff belongs to by phone before staff visits you.

+ Plus 1 Service

You're able to be serviced two things at the same time. Visiting engineer will check other machines as well as the machine that you have trouble with.

+ Re-Trouble Free Service

If the fixed machine is out of order again. We'll fix the machine free of charge. So please register for re-fixing service if the machine has the same trouble as before.

+ Happy Call Service

We'll be responsible after service.
After providing fixing service, we'll check whether you're satisfied with the service as well as the condition of the machine.

+ Visit System on appointment

We'll visit during the date and time when you're convenient the most.





PRODUCTION PROCESS

Management, which achieves customer satisfaction, **begins with providing best technology.**





EQUIPMENTS

PRINTING M/C



LARGE-SIZED FULLY AUTOMATIC
SCREEN PRINTING M/C



VISION SYSTEM FULLY AUTOMATIC
SCREEN PRINTING M/C



HIGH PRECISION SEMI AUTOMATIC
SCREEN PRINTING M/C



FOUR POST SEMI AUTOMATIC SCREEN
PRINTING M/C



HIGH PRECISION SEMI AUTOMATIC
SCREEN PRINTING M/C



FULLY AUTOMATIC SCREEN PRINTING
M/C FOR SOLAR CELL



FULLY AUTOMATIC SCREEN PRINTING
M/C FOR THIN FILM SOLAR CELL



TURN TABLE FULLY AUTOMATIC
SCREEN PRINTING M/C



SEMI AUTOMATIC SCREEN
PRINTING M/C



PRECISION MANUAL SCREEN
PRINTING M/C

DRYER M/C



NIR DRYER FOR SOLAR CELL



NIR DRYER



IR DRYER



BOX OVEN



UV CURING M/C





EQUIPMENTS

SCREEN FRAME M/C



AUTOMATIC SCREEN WASH-OUT
M/C



AUTOMATIC EMULSION COATING
M/C



MECHANICAL STRETCHING M/C



SCREEN FRAME DRYER



UV EXPOSURE M/C

SUBSIDIARY M/C



FULLY AUTOMATIC SQUEEGEE
SHARPENER



CLEANING M/C



LAMINATING M/C



ROLL FILM CUTTING M/C



INK MIXER





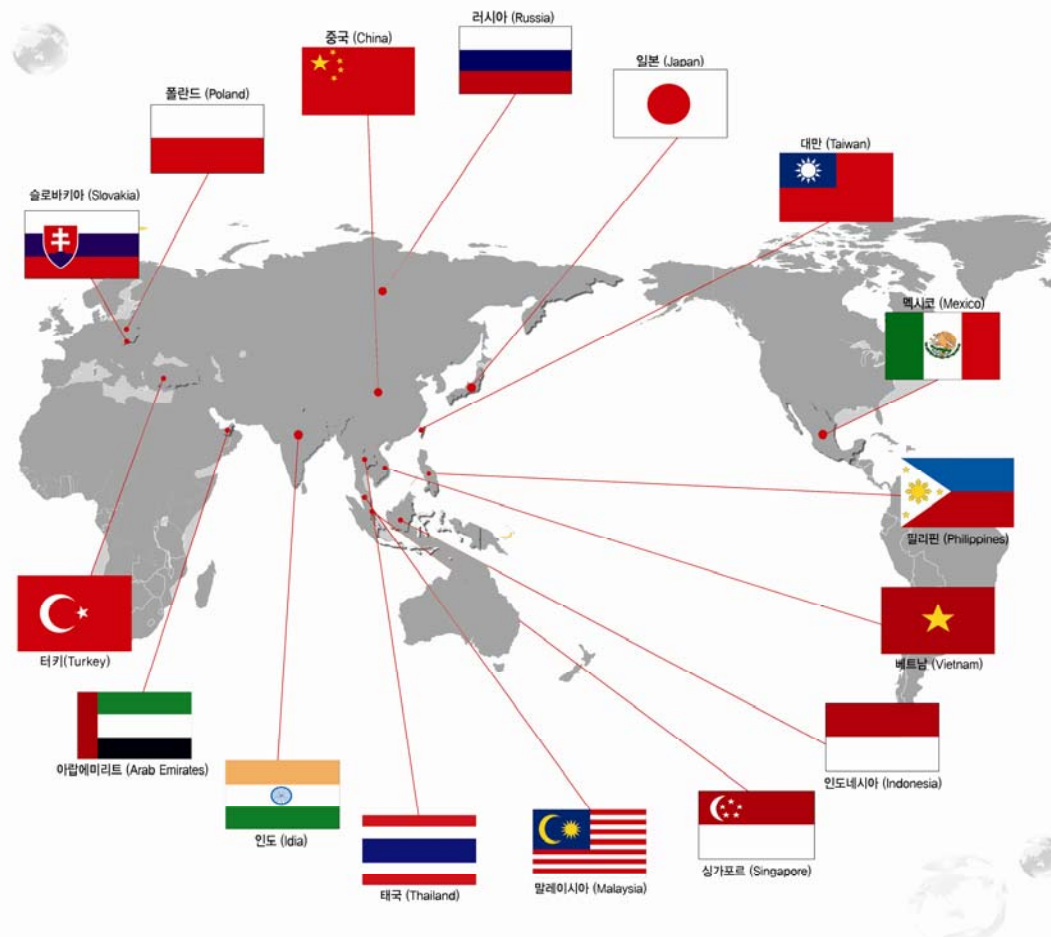
www.linesystem.co.kr

BUSINESS PARTNER





OVERSEAS EXPORTING COUNTRIES



THANK YOU

Your smile is happiness of LINESYSTEM